

Long-term forecasts of alternative drivers of state failure

Drew Bowlsby

10/4/2017

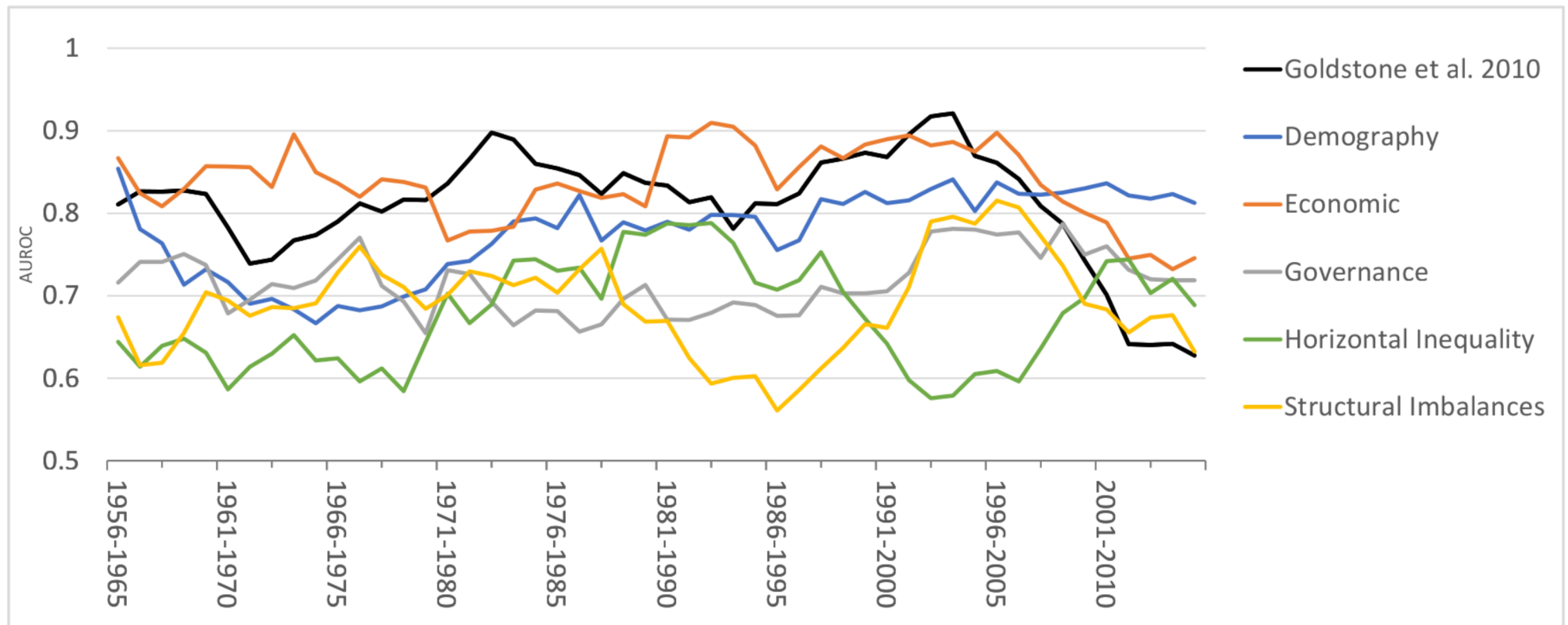
Roadmap

- Identifying alternative drivers to state failure
- The International Futures platform
- IFs forecasts for internal war
- IFs forecast for conceptually distinct models

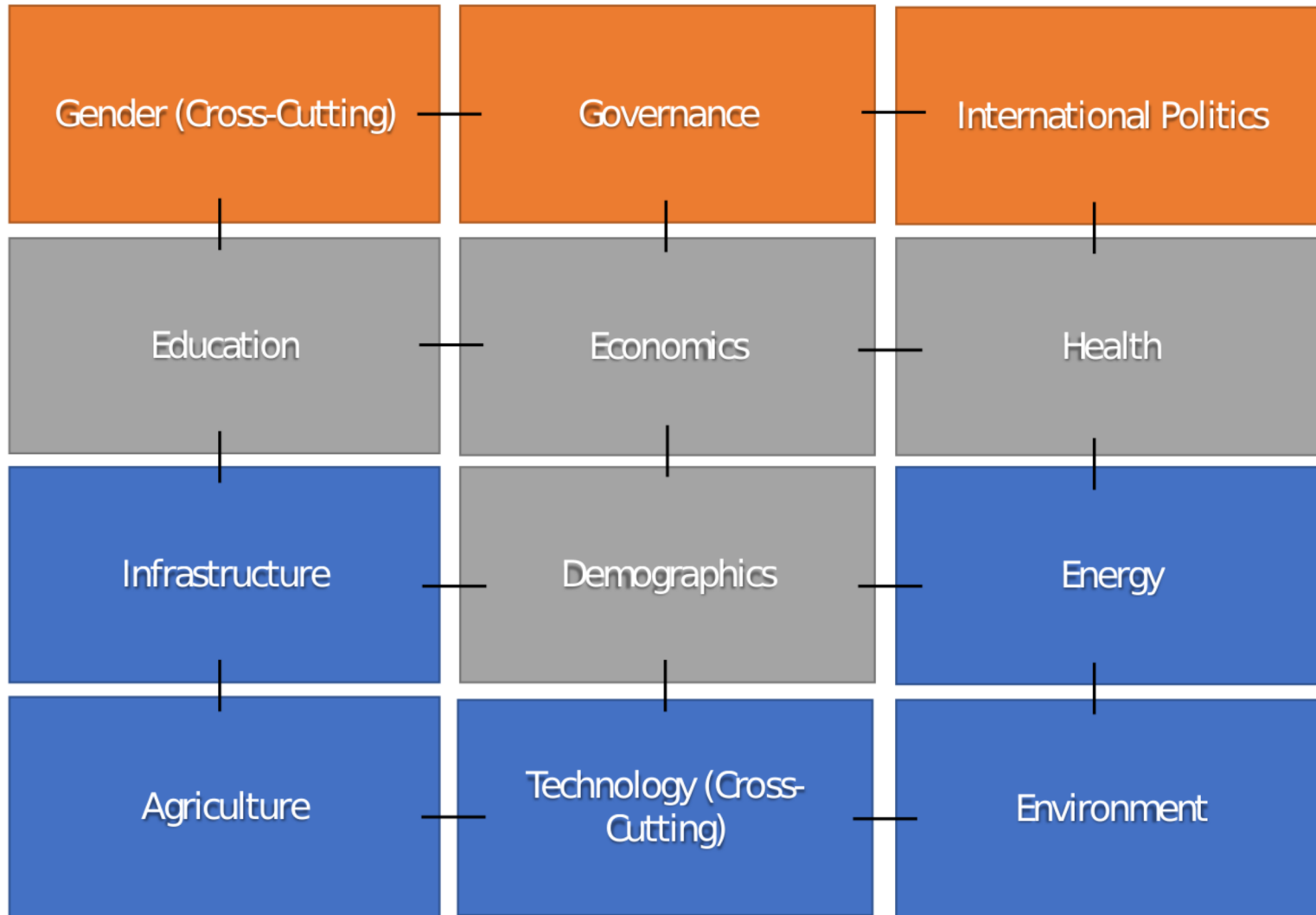
Goldstone et al. (2010) Model

Inputs (i.e. Drivers)	
Regime Type	<ul style="list-style-type: none">• Full Autocracy• Partial Democracy with Factionalism• Partial Democracy w/o Factionalism• Full Democracy
Infant Mortality	<ul style="list-style-type: none">• Logged and normalized to each year
State-led Discrimination	<ul style="list-style-type: none">• Binary Indicator• 1 = coding of 4 on either indices of political or economic discrimination (Minorities at Risk Project)
Neighborhood Conflict	<ul style="list-style-type: none">• Binary Indicator• 1 = 4+ bordering states with major armed civil or ethnic conflict

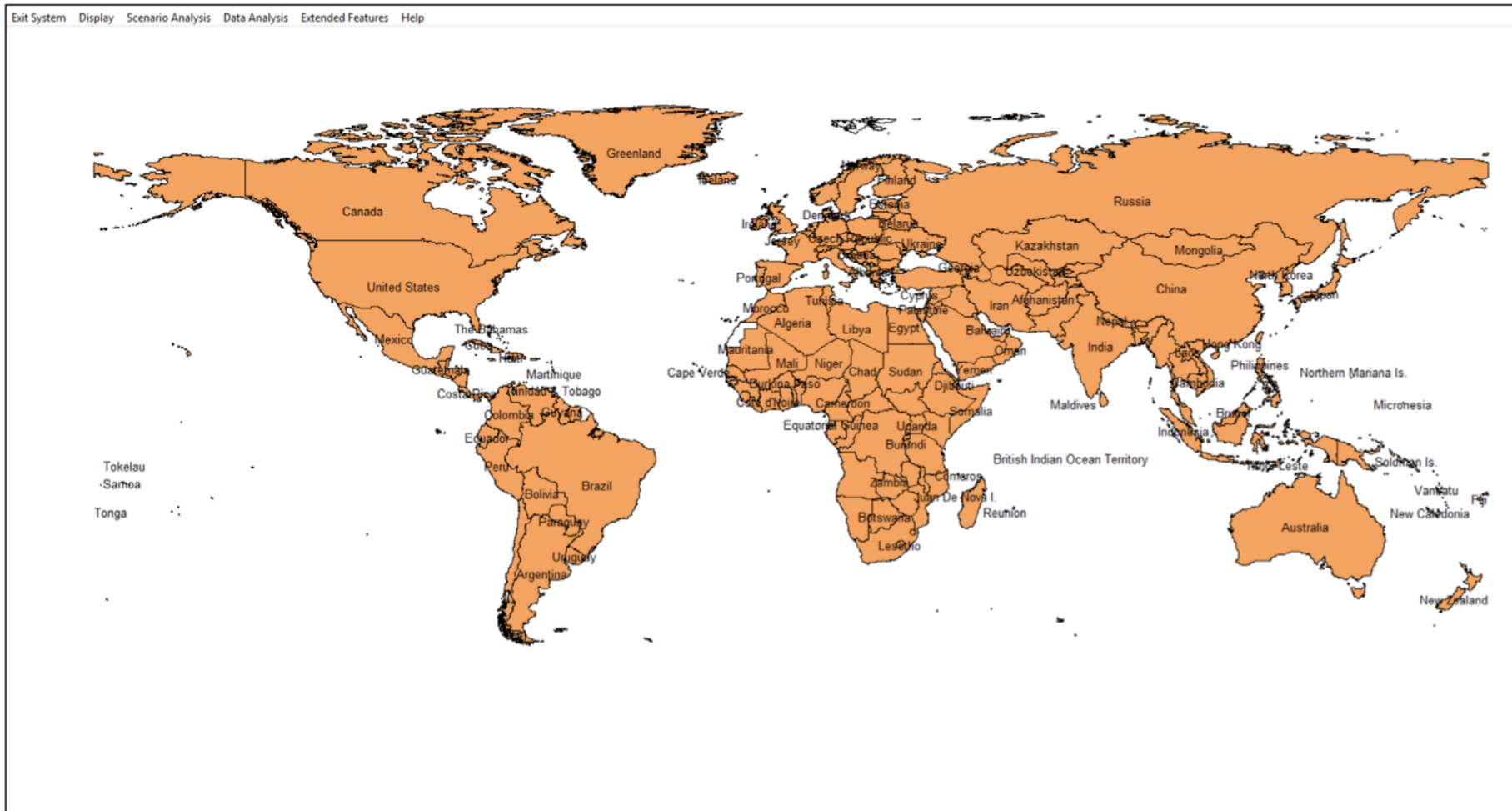
Goldstone Model Performance



International Futures (IFs)



IFs – Main Menu Screen



IFs – Flexible Display Screen

Continue Display Format Geography Options Other Graphs List Features Explain Initials Search

Display Categories:

- ALL
- Agriculture
- Conflict
- Country Profile
- Cyber
- Development
- Distribution
- Economy Finance External
- Economy Finance Internal
- Economy Forecasts by Others
- Economy GDP
- Economy GDP per Capita
- Economy Informal
- Economy Productivity
- Economy Value Added
- Education
- Education Forecasts by Others
- Education Primary
- Education Secondary
- Education Tertiary
- Energy
- Energy Forecasts by Others
- Environment
- Forecasts by Others
- Globalization
- Google
- Governance
- Government Finance
- HD Multivariate Report
- HD Report
- Health
- Health Finance
- Indices
- Indices - SOFI
- Infrastructure Finance
- Infrastructure Other Forecasts
- Infrastructure Physical
- International Politics
- Knowledge Society
- Population
- Population Forecasts by Others
- Population Retired

Displays:

- A Selection of Human Condition Variables (Use A Table) - Assorted units
- A Selection of Human Condition Variables, History and Forecast - Assorted units
- Aging Index - Percent of population 65 and over relative to children
- Aging Index, History and Forecast - Percent of population 65 and over relative to children
- Aging Index, Ratio - Ratio of population 65 and over relative to children
- Aging Index, Ratio, History and Forecast - Ratio of population 65 and over relative to children
- Agricultural Balances - Million metric tons
- Agricultural Balances per Capita - Tons per capita
- Agricultural Demand - Million metric tons
- Agricultural Demand, History and Forecast - Million metric tons
- Agricultural Exports and Imports, Value - Billion dollars
- Agricultural Exports and Imports, Value per Ton - Dollars
- Agricultural Exports and Imports, Volume - Million metric tons
- Agricultural Exports and Imports, Volume, History and Forecast - Million metric tons
- Agricultural Exports, Value - Billion dollars
- Agricultural Exports, Value per Ton - Dollars
- Agricultural Exports, Volume - Million metric tons
- Agricultural Exports, Volume, History and Forecast - Million metric tons
- Agricultural Imports Dependence, History and Forecast - Net as a percent of demand
- Agricultural Imports, Value - Billion dollars
- Agricultural Imports, Value per Ton - Dollars
- Agricultural Imports, Volume - Million metric tons
- Agricultural Imports, Volume, History and Forecast - Million metric tons
- Agricultural Prices, Domestic, Food Price (base 100) - IFs index
- Agricultural Prices, World, Food Price (base 100) - IFs index
- Agricultural Production - Million metric tons
- Agricultural Production per Capita, Post Loss - Metric tons
- Agricultural Production per Capita, Post Loss, Hist and Forecast - Metric tons
- Agricultural Production per Capita, Pre Loss - Metric tons
- Agricultural Production, History and Forecast - Million metric tons
- Agricultural Production, Losses - Million metric tons
- Agricultural Production, Pre Loss - Million metric tons
- Agricultural Use, All - Million metric tons
- Agricultural Use, Feed - Million metric tons
- Agricultural Use, Food - Million metric tons
- Agricultural Use, Food Industry and Feed - Million metric tons
- Agricultural Use, Food Manufacturing - Million metric tons
- Agricultural Use, Industry - Million metric tons
- Agricultural Use, Total - Million metric tons
- Agricultural Use, Transformation Losses - Million metric tons
- Agricultural Yield Change from CO2 - Percent
- AIDS Death Rate - Percent of population

Geography:

- Afghanistan
- Albania
- Algeria
- Angola
- Argentina
- Armenia
- Australia
- Austria
- Azerbaijan
- Bahamas
- Bahrain
- Bangladesh
- Barbados
- Belarus
- Belgium
- Belize
- Benin
- Bhutan
- Bolivia
- Bosnia
- Botswana
- Brazil
- Brunei
- Bulgaria
- Burkina Faso
- Burundi
- Cambodia
- Cameroon
- Canada
- Cape Verde
- Central AFR
- Chad
- Chile
- China
- Colombia
- Comoros
- Congo, Democratic Republic of
- Congo, Republic of
- Costa Rica
- Cote d'Ivoire
- Croatia
- Cuba

Horizon:

- 2035
- 2040
- 2045
- 2050
- 2055
- 2060
- 2065

Scenarios:

- 0 - Working File, based on IFsBASE.RUN
- 1 - IFsBase.run
- 2 - Contraception.run
- 3 - ContraceptionAndTransfers.run
- 4 - Markets First.run
- 5 - Policy First.run
- 6 - Security First.run

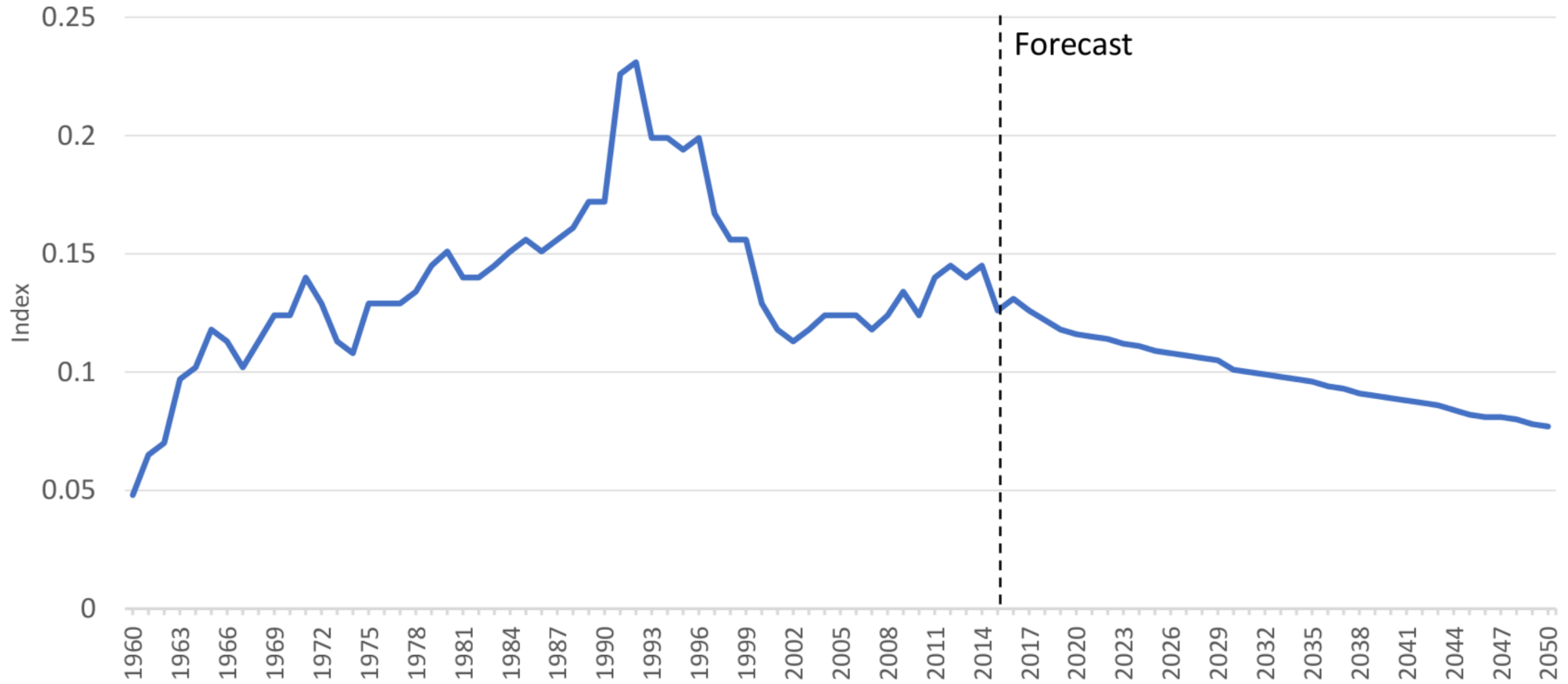
Table
Line Graph
Bar Graph
Explain Scenario
Map

Activate Windows
Go to Settings to activate Windows.

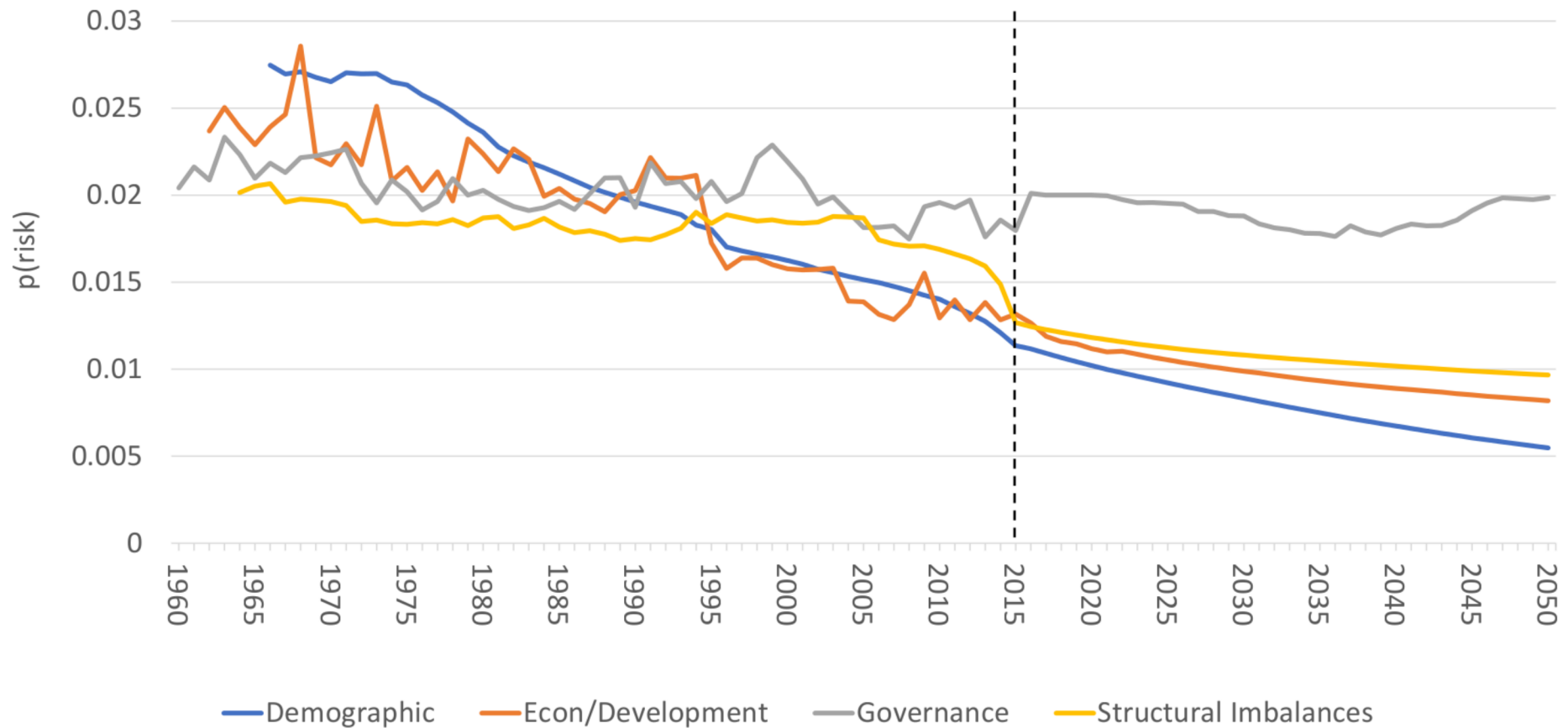
State Failure Models in IFs

Model	Inputs (i.e. drivers)
Internal War Magnitude (SFINTLWARMAG)	<ul style="list-style-type: none"> • Regime type (polity 21-point scale) • Trade Openness • Gross Domestic Product • Youth Bulge
Demographic (SFDEM)	<ul style="list-style-type: none"> • Infant Mortality • Population (logged) • Youth Bulge Pop (15+)
Economic/ Development (SFCONDEV)	<ul style="list-style-type: none"> • GDP/cap (logged) • GDP/cap Growth • Life Expectancy
Governance (SFGOV)	<p>Polity broken into 6 categories:</p> <ul style="list-style-type: none"> • Full Autocracy (< -8) • Partial Autocracy (-6 to -4) & Partial Autocracy (-5 to 0) • Partial Democracy (1 to 3) & Partial Democracy (4 to 6) • Full Democracy (> 7)
Structural Imbalances (SFIMBAL)	<ul style="list-style-type: none"> • Polity v. Gdppc • Life Expectancy v. Gdppc • Youth Bulge Population (15+) v. Polity

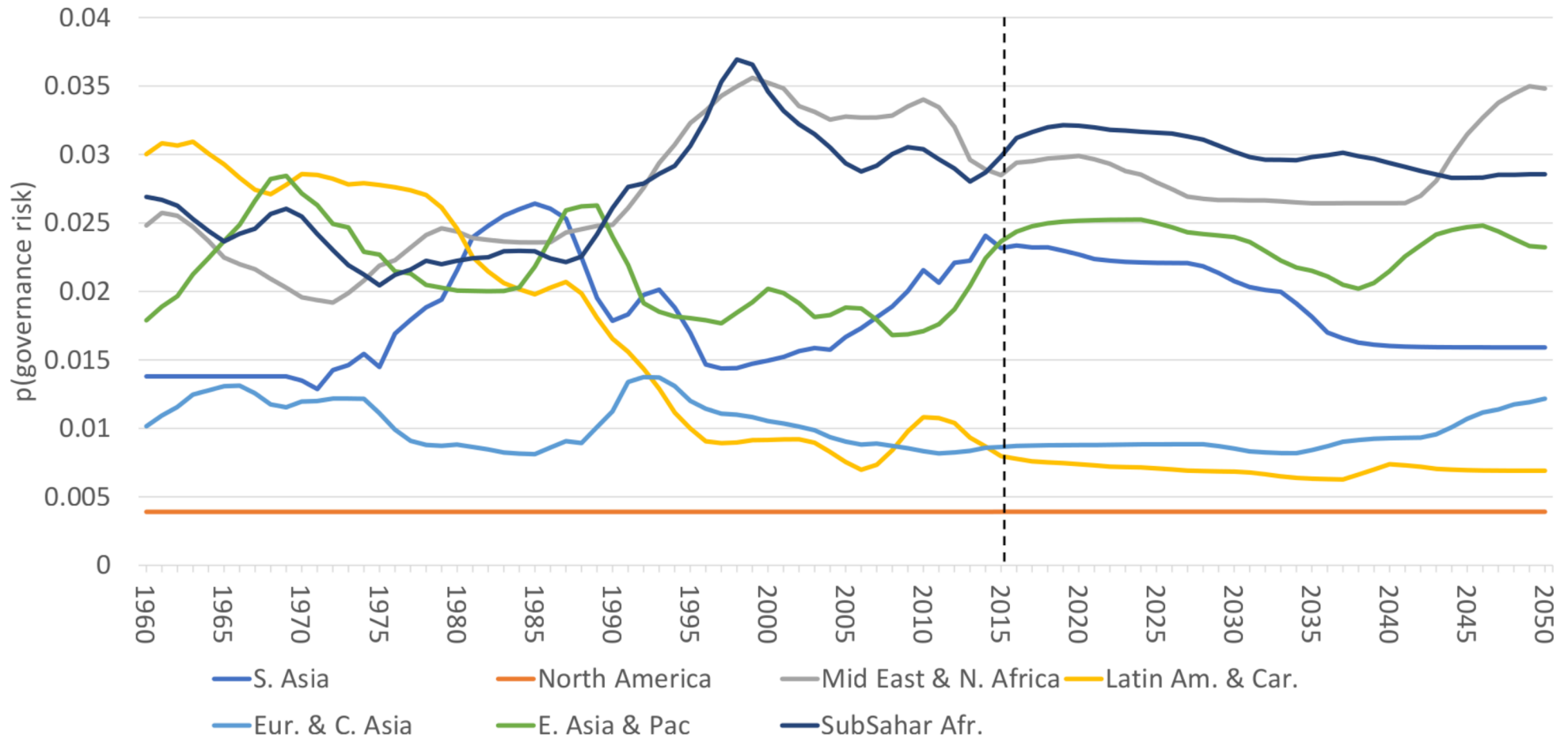
Global Internal War Magnitude Forecasts



Global Forecasts for Conceptually Distinct Models



Regional Forecasts for Governance Risk



Final Takeaways

- Risks of instability may be driven by the existence of multiple pathways to political instability
- The IFs forecasts expect the pressures associated with demography, economic and, development/economic are expected to lessen on the global scale over the long-term
- The long-term forecast in IFs expects states will need to move through the mixed regime space and may be more unstable than either autocratic or democratic governments