

Impactsworld 2017, Potsdam 11.-13.10.

Workshop C9: Near-term crop yield forecasts to mitigate production risks

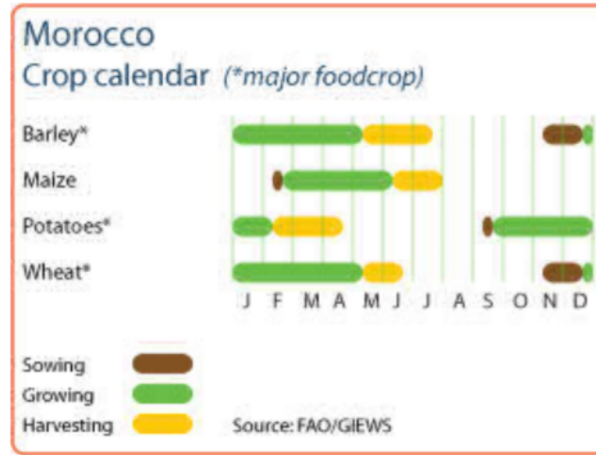
Wednesday 11 October, 4:00pm, Room 233

Forecasting Moroccan Wheat Yields using Two Statistical Models

Frank Wechsung, Peter Hoffmann,
Katja Frieler

(Potsdam Institute for Climate Impact
Research (PIK), Germany)

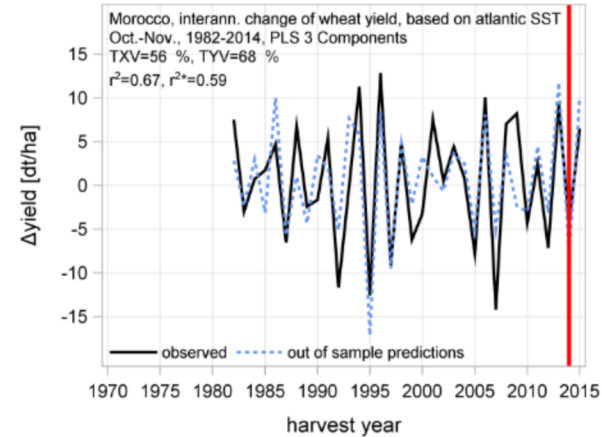
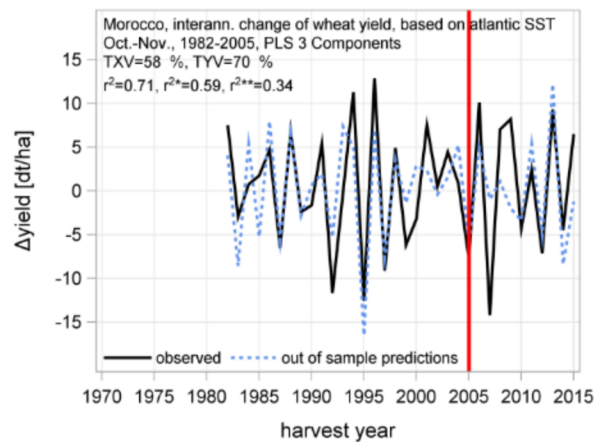
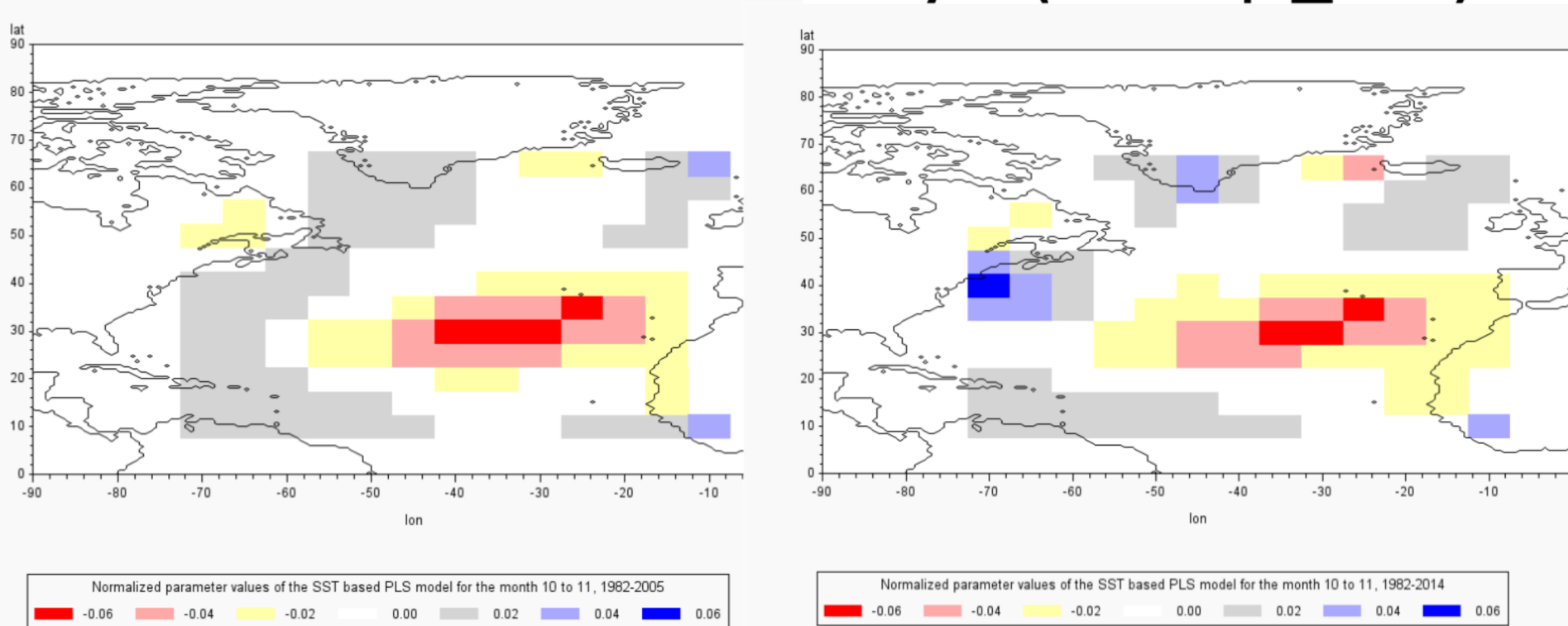
Marocco wheat



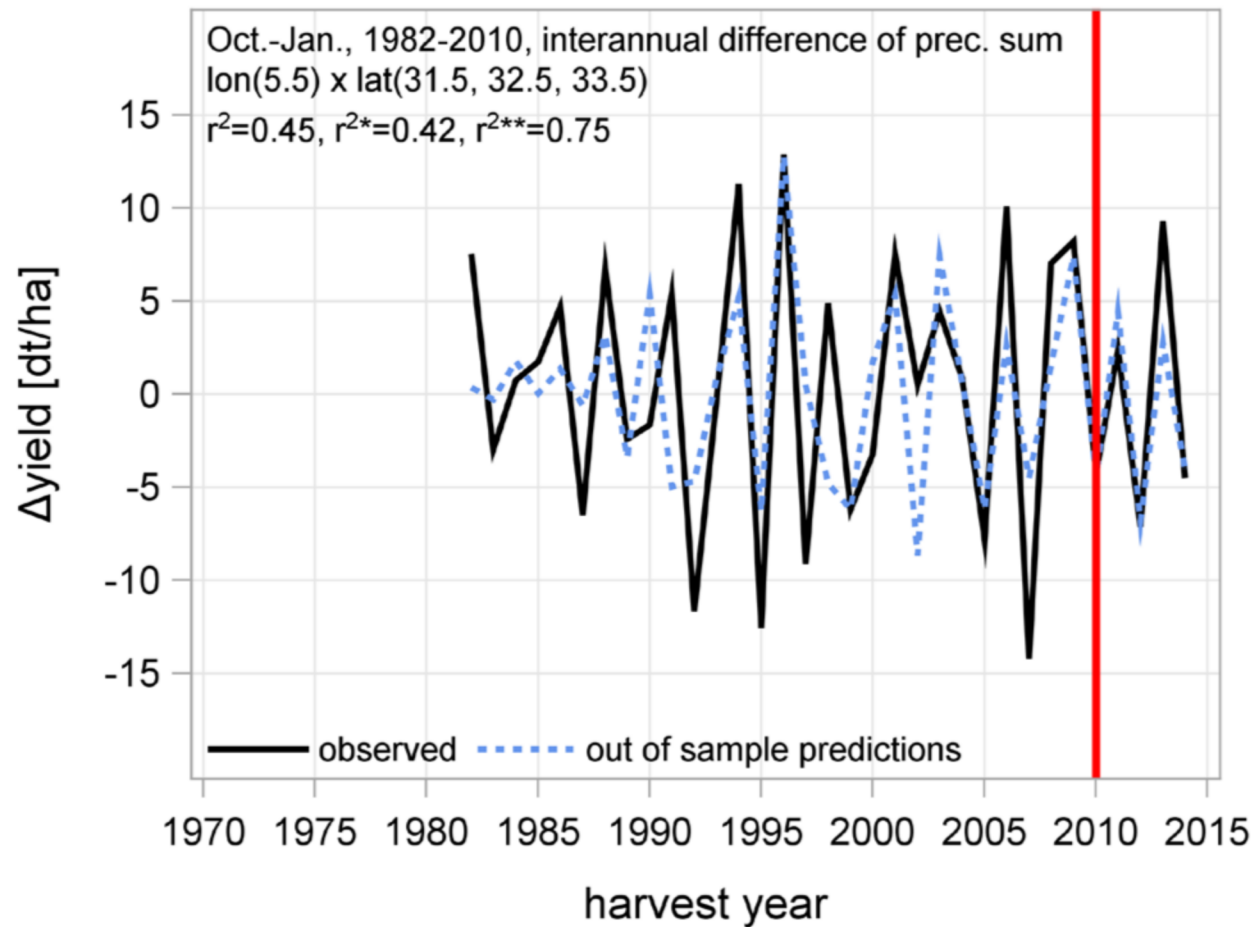
Model Pre-Planting : $\Delta y = f(\Delta SST \mid \sum ON)$, f- Partial Least Square Regression

Model Mid-Season : $\Delta y = f(\Delta P \mid \sum ONDJ)$, f- Linear Regression

Model Pre-Planting : $\Delta y = f(\Delta SST | \Sigma ON)$



Model Mid-Season:

$$\Delta y = f(\Delta P \mid \sum \text{ONDJ})$$


Outlook

- Publication
- System upgrade in 2018
- Extension to other African countries