

SECTEUR: Sector Engagement for the Copernicus Climate Change Service (C3S): Translating European User Requirements

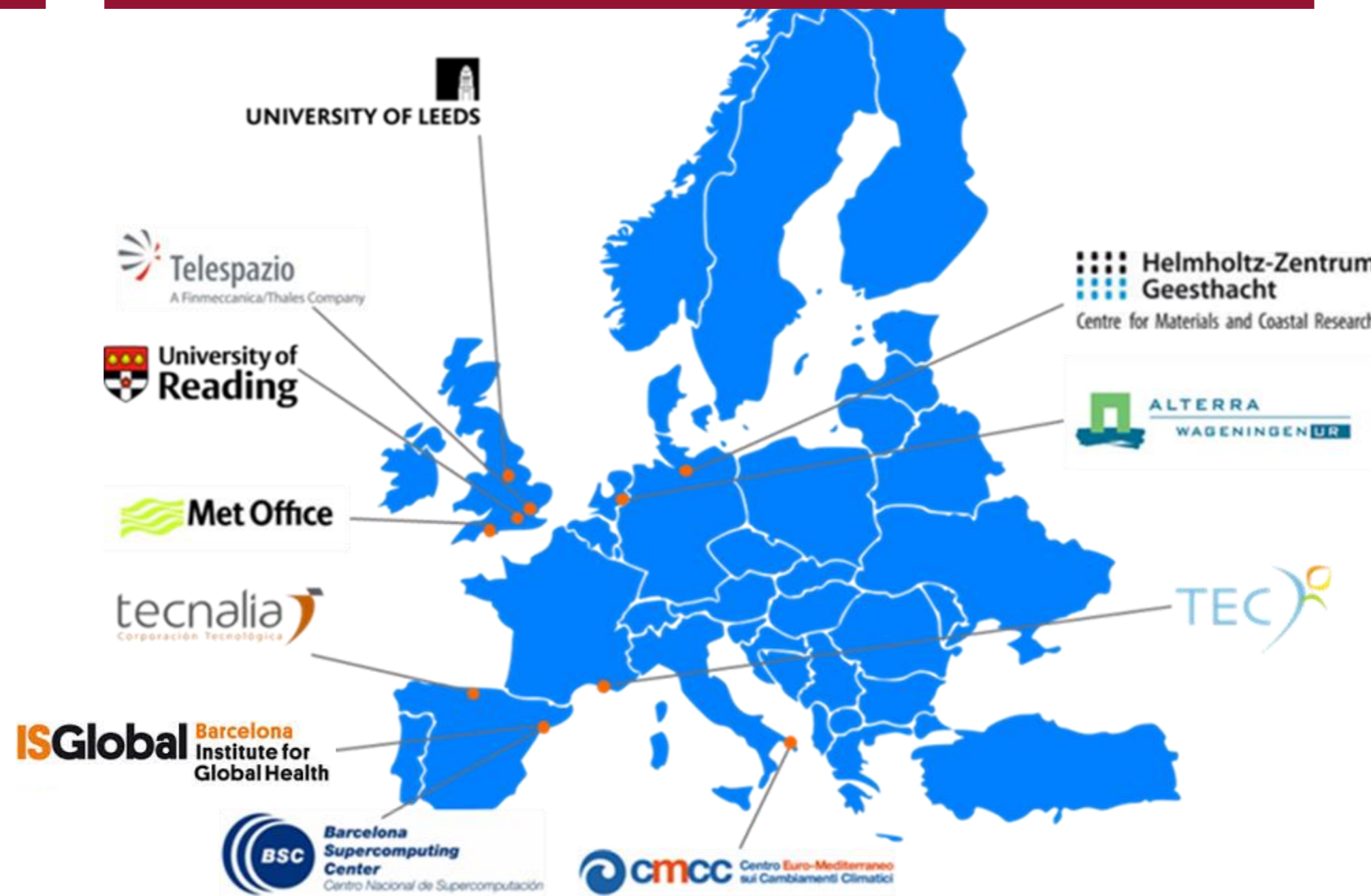
This is an EU Copernicus Climate Change Service contract led by the Institute for Environmental Analytics, UK

What? - Purpose

To understand user requirements for climate data, aiming to deliver better-tailored information to support decision-making.



Who? - The Team



Sector Champions:



How? - Methodology

1. Extensive literature review to assess current requirements
2. Targeted pan-European engagement:
 - Online survey
 - Sectoral workshops
 - Interviews
 - Focus groups
 - Meetings and conferences

Outcomes

- C3S User Requirements Database for climate information
- Identifying gaps and recommendations for C3S

We are providing information to C3S on the needs, scope and gaps in climate information

Key observations from the SURVEY

Common cross-sectoral indicators:

- Precipitation
- Temperature
- Intensity of windstorms
- Flood frequency

Leading provider:

- National Meteorological and Hydrological Services

Key applications:

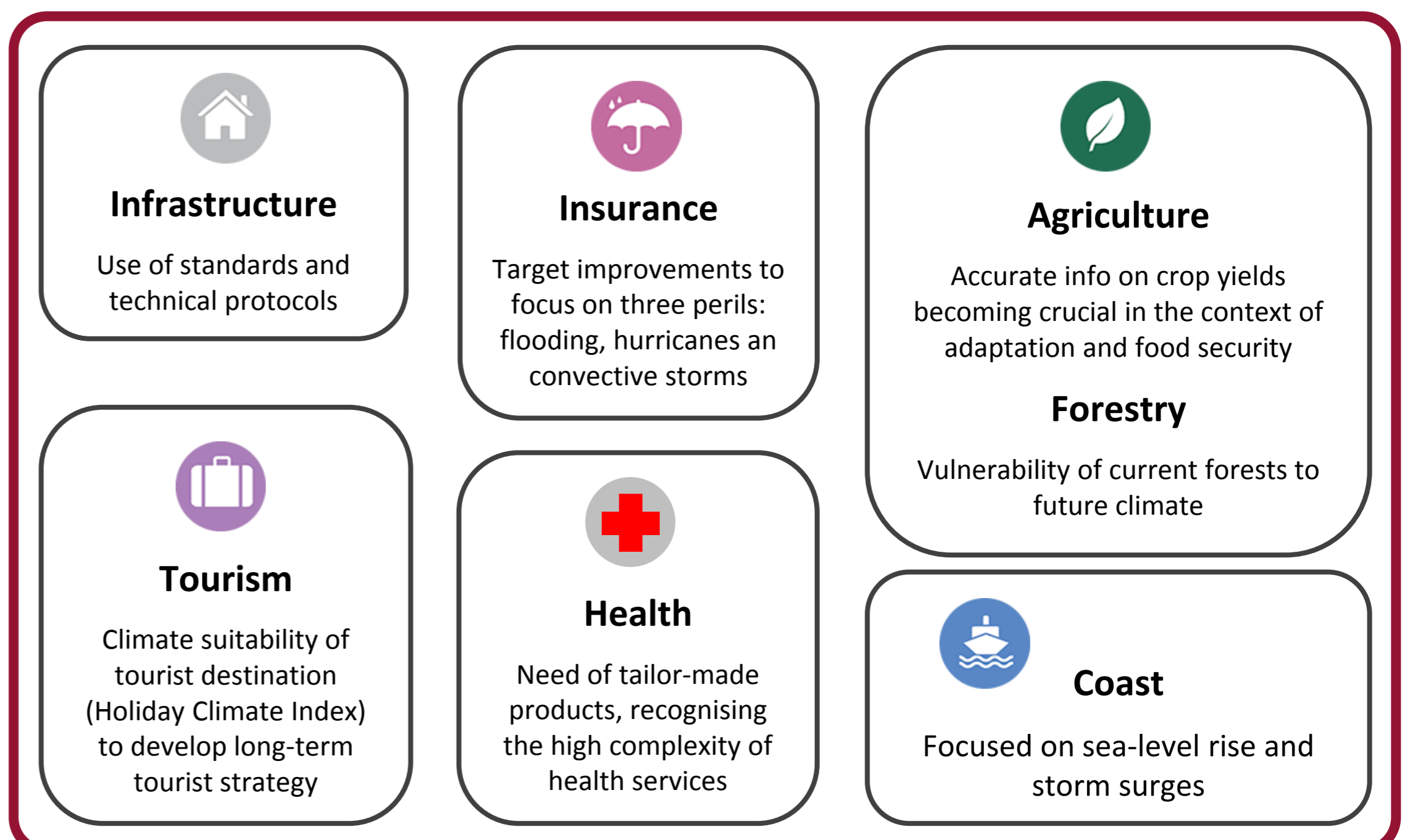
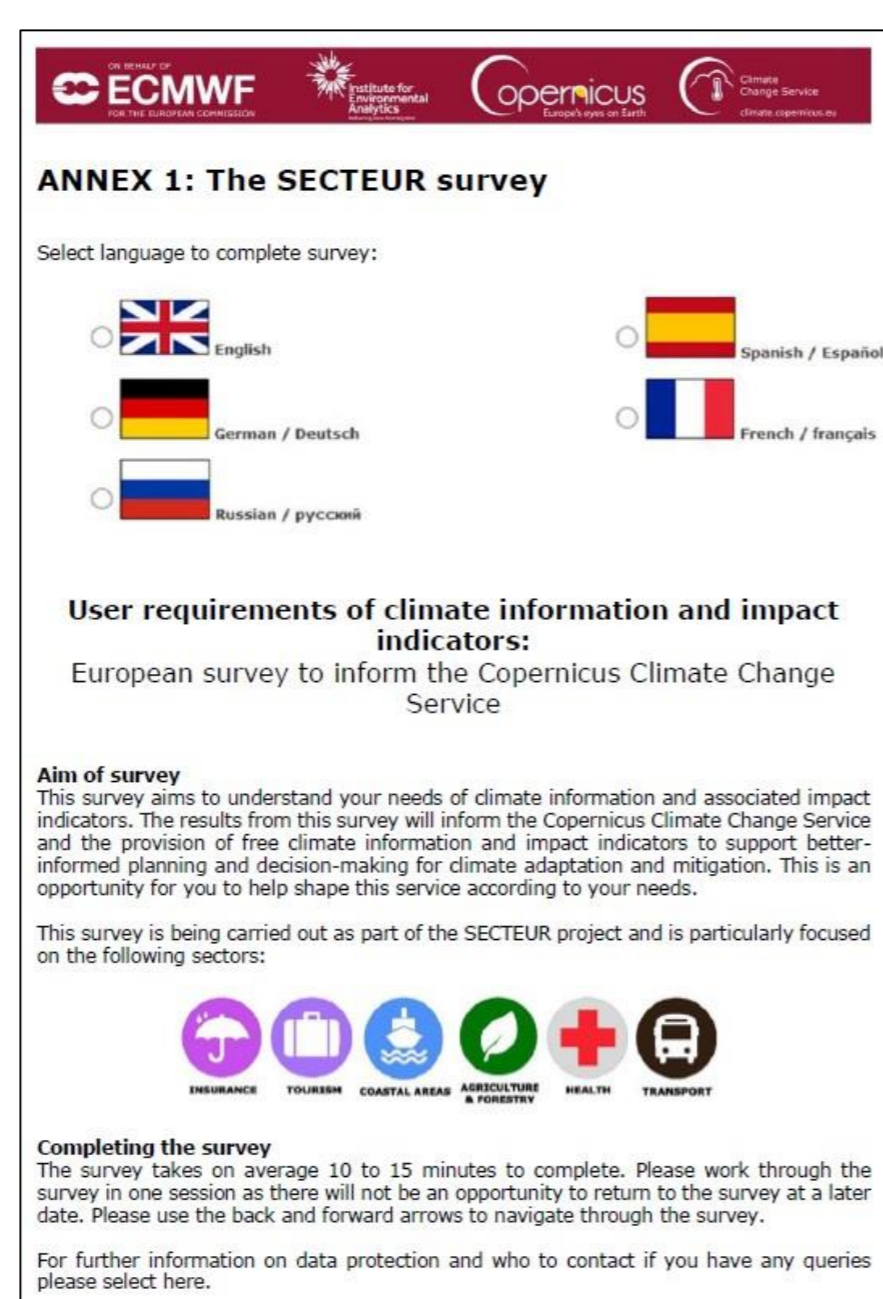
- Research
- Risk management
- Raising awareness
- Evaluating risk exposure
- Day-to-day operational activities
- Long-term strategic planning over various time horizons

Temporal scales of decision-making:

- Mostly medium term (2 to 49 years) and annual time scales
- Seasonal, immediate, weekly and monthly temporal frames are also widely supported

Spatial scales of decision-making:

- Tendency towards sub-national and national



Find out more ...
 Dr Maria Noguera, Service Manager
m.noguera@the-iea.org
<http://climate.copernicus.eu/secteur>
 Dr Bernd Eggen, Met Office Hadley Centre
bernd.eggen@metoffice.gov.uk

Key observations from the WORKSHOPS

Commonalities:

- Users use ... weather information not climate
- Users mainly use ... observations and seasonal forecast
- Users need ... higher spatial/temporal resolution
- Users call for ... accessible and user-friendly information/data
- How to deal with uncertainty
- How to decide which portal/scenario to use